

**INTENDED USAGE:**

The products of the *KING Grab Bar line* allow to increase independence while taking a shower or while standing up and sitting down on the toilet bowl or in the bathtub. They work as a robust and safe handle, on which the user can hold on in order to relieve part of the body weight from the legs, reducing muscle fatigue due to standing position as well as slip and injuries risks. It can be installed in different places in the bathroom, depending on the user requirements.

**INDICATIONS AND CONTRAINDICATIONS:**

The KING Grab Bar is aimed towards elderly people, wheelchair users and to all those who need a further support during the use of the bathroom. The user is required to have sufficient ability to grip firmly the grab bar as well as sufficient autonomy.

**SAFETY WARNING AND INDICATIONS:**

- The maximum user weight indicated in the fitting instructions must not be exceeded.
- Before every use, be sure the grab bar is firmly fixed to the wall.
- During assembly, strictly adhere to what is shown in the User Manual.
- Do not modify the grab bar in any way.
- Do not use the grab bar if damaged or altered in any way. Cracks and deformations may strongly affect the performances and safety of the device.
- Do not touch the grab bar with greasy hands. Slippery surface may reduce the grip and could cause a fall.
- Do not use the grab bar for a different purpose from the intended one: it must not be used to replace a stair.
- The grab bar must not be stored outdoors.

**MAINTENANCE INFO:**

The products maintenance consists of the cleaning and sanitation procedures. In order to guarantee a safe use and adequate standard of hygiene, the user should perform these procedures before every use.

The user has to make certain of the structural integrity of the device and its components and the tightness of the screws must be checked. For cleaning and sanitation procedures, follow the steps below:

1. Gloves should be worn.
2. Remove the evident dirt before to proceed with the most accurate disinfection.
3. Use water or non aggressive detergent for the cleaning procedure.
4. Wipe with a dry and clean cloth.

**Alternatively, the product can be cleaned in domestic dishwashers at the maximum temperature.**

**REUSE REQUIREMENTS:**

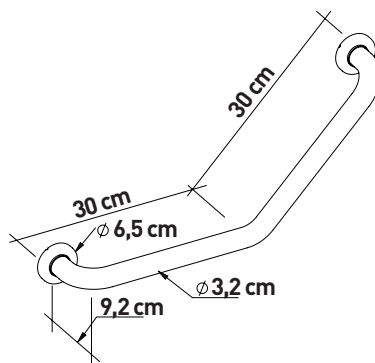
The product is suitable for reuse by other users. Before reuse by others, the product must be correctly cleaned and sanitized. Before the transfer of the product to others, the product must be checked by qualified dealers.

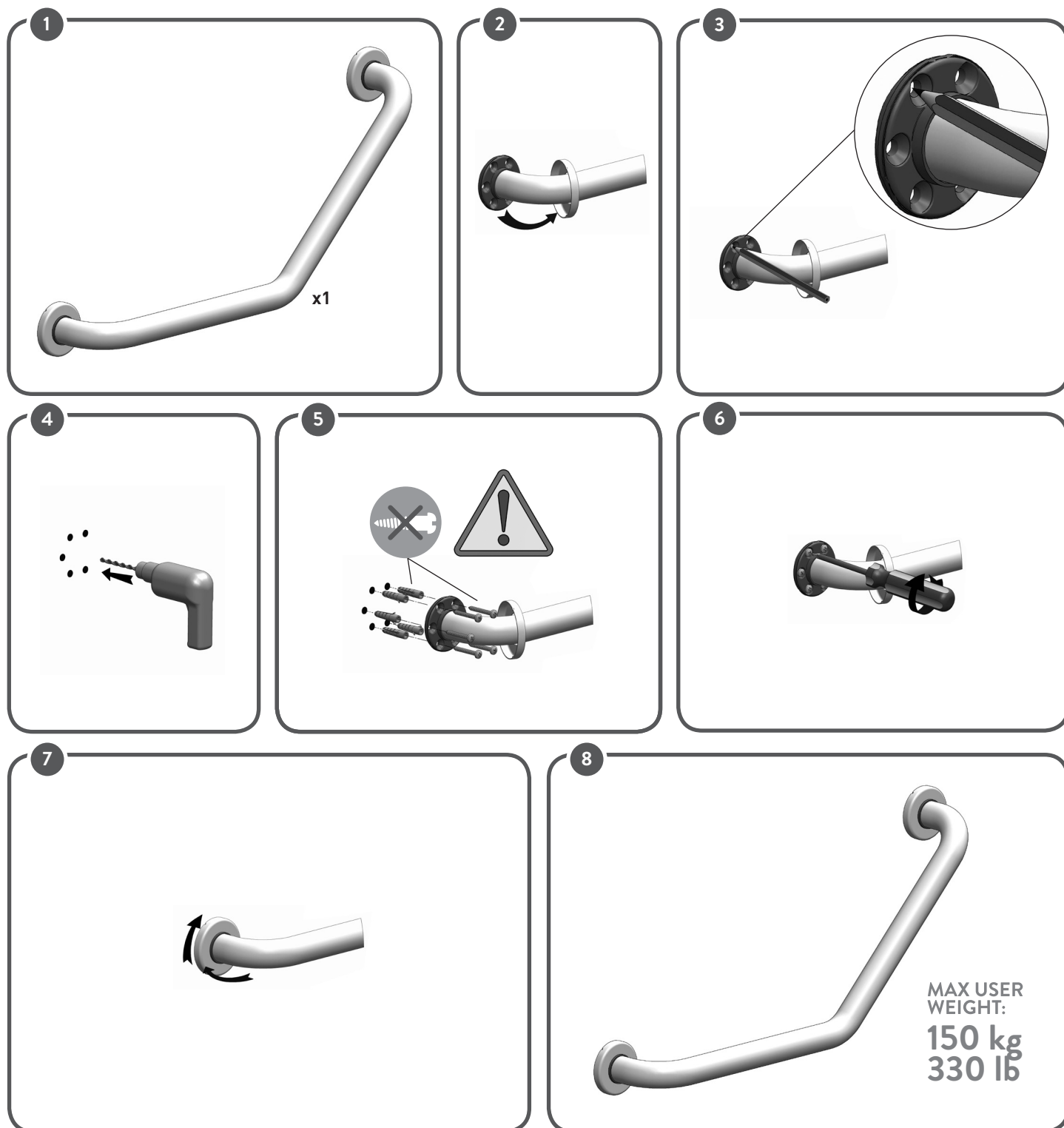
**CORRECT DISPOSAL PROCEDURE:**

Do not dispose of the product in the normal household waste. Ask your local authority beforehand for the correct and environmentally friendly way to dispose it.

**INCIDENT REPORTING:**

If there was a serious incident involving this device, contact the manufacturer of this product at [info@lmglobaldesign.com](mailto:info@lmglobaldesign.com) and the responsible authority in your country.





**MADE IN ITALY**

